

One Point Wireless Manager

Get the Big Picture on Wireless Network Operations

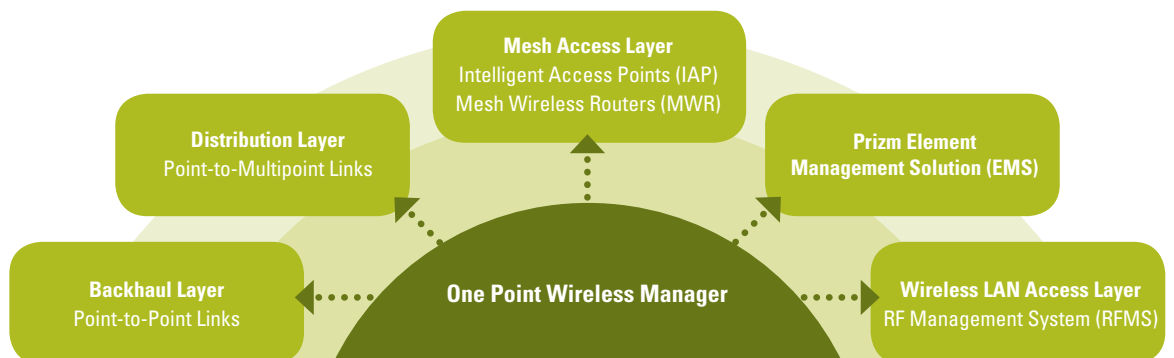
THE ONE POINT WIRELESS SUITE

Wireless Manager is part of Motorola's comprehensive One Point Wireless Suite of integrated software solutions which make the design, deployment and management of wireless networks more visual, more complete and more efficient. With the software suite, you can design, deploy and manage your Motorola indoor and outdoor wireless broadband networks from inception through ongoing operation and expansion. In addition to One Point Wireless Manager, the suite includes applications that streamline the process of designing and verifying your network: PTP LINKPlanner, MeshPlanner, LANPlanner and RFMS for stand-alone WLAN management.

Motorola's One Point Wireless Manager is a powerful, flexible and scalable wireless network deployment and management solution for Motorola's indoor Wireless LAN and outdoor wireless broadband networks. The solution combines sophisticated Google map-driven network mapping with advanced deployment, configuration and management functionalities to bring total network control to a more visual, more effective level.

The Wireless Manager provides integrated management of Motorola's wireless MOTOMESH™, Point-to-Point (PTP), Point-to-Multipoint (PMP) and Wireless LAN networks. It offers a powerful new visually enhanced user interface that helps you control your network's access, distribution and backhaul layers, and provides one-click access to Motorola's Prizm Element Management Solution for PMP systems and RFMS for Wireless LANs.

One Point Wireless Manager's integrated network management solution.



DATA SHEET

ONE POINT WIRELESS MANAGER

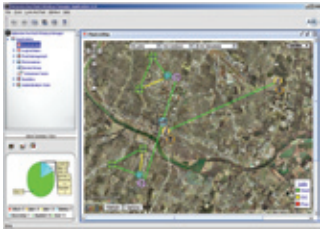
WIRELESS MANAGER HARDWARE AND SOFTWARE REQUIREMENTS

Server Software Requirements

- Wireless Manager Software
- Red Hat Enterprise Linux ES v4.0 or Windows Server 2003 Enterprise Edition Service Pack 2
- Java Runtime Library 1.6x
- MySQL 5.0.40 or later

Server Hardware Requirements

- A minimum of 2GB RAM, 4GB recommended



UNSURPASSED EXPERTISE

As an acknowledged leader in integrated wireless technologies, Motorola offers nearly 80 years of unsurpassed expertise in designing, deploying and managing wireless networks around the world. Our solutions are empowering stronger, more effective networks for a broad range of customers, including municipal public safety and public works departments, schools and educational institutions, medical centers and healthcare systems, and commercial networks for service providers of all sizes.

One Point Wireless Manager provides a single consolidated deployment and management application that delivers integrated network control while reducing training time and costs. The solution automatically incorporates complex relationships between network layers, and makes use of Google maps technology for the visualization of network devices and connectivity on both macro and micro levels. You can instantly view total network coverage and link performance data in real time from a single computer console.

Key features and benefits include:

FEATURE	DESCRIPTION
Sophisticated & Powerful Element Management System	Concentrates element information for the indoor and outdoor wireless networks into a single tool.
Network Performance Visualization	Overlays network elements with Google map satellite images to display a wide range of element information such as link quality, alarms, range, etc., which enables a user to view a complex set of information quickly and easily.
Consolidated Wireless Network Control	Through a single application have visibility and control of indoor and outdoor access, mesh and backhaul network layers.
Scalability	Supports growing networks to accommodate more users, larger geographic areas and new applications.
Template-based Configuration	To reduce time and errors, and accelerate the deployment/change process user-defined templates are used for configuring mesh devices on the network.
Auto Discovery	To enable faster implementation and reduce costs and errors new Mesh equipment is automatically discovered and quickly provisioned via templates.
Network Monitoring	Uses real-time polling to determine the current status of all elements for quick resolution of problems that impact performance and customer satisfaction.
Activity Scheduling	Save time by automating tasks per a particular schedule.
User Configuration Groups	Provides the ability to establish device groups according to the operator's own definition.
Detailed Audit Trails	Captures all of the activity for a particular device.
Historical Analysis	Uses snapshots of the network to show a representation of how the network changes over a period of time to pinpoint network usage, trouble spots or areas in need of additional coverage.
Security	Provides client security (WEP to WPA2) as well as intra-mesh AES-level security through Motorola's Secure Mesh.
Consistency Checking	Operator can select a policy to either accept or reject a change about a device depending upon its consistency with the Wireless Manager.
Advanced Reporting	Allows users to employ a pre-defined or custom report to view a complete health check on the network.
Device Database	Stores all device information in a central database so a device can be easily cloned if it is need of replacement.
North-bound Interface	Supports integration with third party network management systems, such as HP OpenView, via SNMP v3.



MOTOROLA

Motorola, Inc. 1301 E. Algonquin Road, Schaumburg, Illinois 60196 U.S.A. www.motorola.com/wirelessbroadband/onepoint

MOTOROLA and the stylized M Logo are registered in the U.S. Patent and Trademark Office. All other products or service names are the property of their registered owners.

© Motorola, Inc. 2008