

**Dual-mode Rugged Radio
PDC690
ALL IN ONE ALL IN CONTROL
MISSION CRITICAL FOCUSED**



Overview

Hytera PDC690 dual-mode rugged radio combines a mission-critical DMR radio with an Android-based smartphone in a single device. It harnesses the power of narrowband and broadband technologies to provide mission-critical voice call, photo and video taking, positioning, and more. This innovative radio enables seamless communications between DMR network and public network such as 2G, 3G, LTE, and WLAN.

As a professional rugged radio, the PDC690 is engineered for effortless usability. The new Type-C universal interface allows users to charge their devices conveniently while performing tasks. Additionally, the device is built to be rugged, dustproof, waterproof, and shock-resistant, making it ideal for diverse and challenging outdoor emergency rescue scenarios.



Key Features



All-in-one device



Dual screens



IP68



Type-C



Loud and clear audio



AI-based noise cancellation

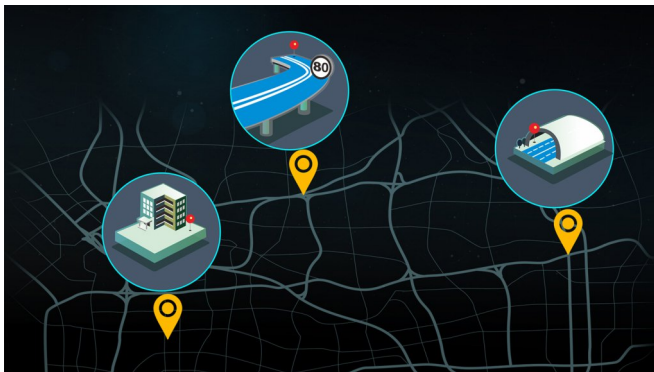


Remote control



Precise positioning

The PDC690 provides fast and accurate positioning to track people or devices, indoor and outdoor. The GPS, Galileo, GLONASS, QZSS, BDS, and A-GPS are used for outdoor positioning, while the location-based service (LBS) and WLAN are adopted for indoor positioning.



Live streaming

Thanks to the dual HD cameras, the PDC690 allows you to capture on-site pictures and videos, and then send them to another radio or command center in real time to dramatically improve situational awareness. The PDC690 also supports the external camera.



Automatic switch

The PDC690 can automatically switch between DMR network and LTE network. Registering with both networks using the same ID, the PDC690 can always select the optimal one to deliver smooth and reliable voice communications everywhere, indoors or out.



Purpose-built app

With the Android system, the PDC690 can support system-level apps developed by Hytera and other third-party apps. This helps you communicate and respond efficiently.



Type-C charging port

Adding a Type-C port meets the needs of fast charging of devices. It can also be charged conveniently at the front-line combat site without the need to carry a traditional charger. Optional 4000mAh battery with long battery life supports all-weather outdoor operations.



All-in-one device

With highly integrated and modular design, the PDC690 combines a DMR radio and a smartphone into a single device. So you do not need to carry two separate handsets for accessing voice, data, video, and more.



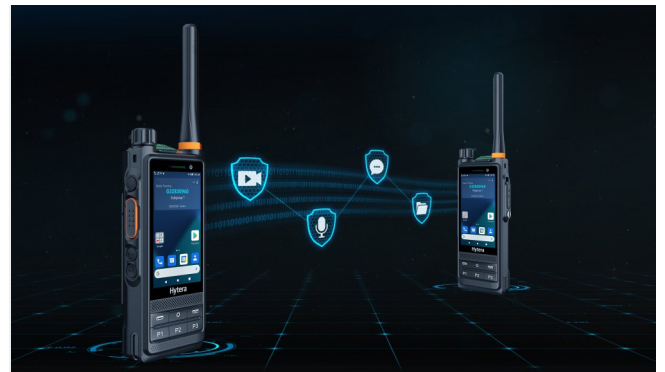
Loud and clear audio

Using the enlarged front chamber technology and professional acoustic design, the PDC690 can output sound at up to 128 dB. To ensure crystal and clear audio in noisy environments, the PDC690 adopts AI-based noise cancellation, echo cancellation, and wind noise reduction technologies.



All-round security assurance

The PDC690 can secure the voice and data through authentication, software and hardware encryption, or more. TrustZone protects the system; full-disk encryption (FDE) protects the user data; air interface encryption (AIE) and end-to-end encryption (E2EE) protect the voice and data communication; and remote control helps you manage radios.



Rugged and durable

Rated at IP68 and ESD IEC Level 4, the PDC690 withstands water, dust, and electrostatic discharge. It can also withstand 1.5-meter drop from all angles. The industrial-grade touchscreen stands up to continuous use in any weather. All these help the PDC690 perform well in harsh environments.



Smart management

You can remotely manage radios in batches, including upgrade, programming, permission control, key configuration, app management, device health management, and data backup and recovery.



Accessories

Standard



2,400 mAh
Li-Poly Battery
BP2402



Charger (2A)
CH20L13



Power Adapter (2A)



Belt Clip
BC39



Antenna



Strap
RO03

Optional



BT Earpiece
EHW08



Wireless PTT
POA121



Wireless Remote
Speaker Microphone
SM27W2



PTT&MIC Controller
ACN-02P



Water-proof Remote
Speaker Microphone
SM26N1-P



Programming Cable
PC156



Receive-only Earbud
ES-01



Receive-only
Swivel Earset
EH-02



C-Earset
EHS24



4,000 mAh Li-poly Battery
BP4005



Charger (1A)
CH10L29



Multi-unit Charger
MCA25

Specifications

Wireless Data Communication	DMR	UHF:340~470MHz
	LTE	3GPP LTE FDD-LTE:B1/B2/B3/B4/B5/B7/B8/B20/B26/B28 TDD-LTE: B34/B38/B39/B40/B41
	CDMA	CDMA 1xRTT BCO CDMA2000 1xEV-DO BCO
	WCDMA	B1/B2/B4/B5/B8
	GSM	850/900/1800/1900MHz
	WLAN	support
	NFC (Optional)	13.56MHz
Positioning	GPS/BDS/GLONASS/Galileo/QZSS/A-GPS Position performance for open zone : TTFF (Cold boot)< 1minute Horizontal accuracy<5m(95% probable at -130dBm)	
General	Dimensions(H xW x D)	145.3mmx60mmx30.3mm(2400mAh battery) 145.3mmx60mmx35.2mm(4000mAh battery)
	Ports	accessory port: 13pin ging port: Type-C
	Camera	front: 8MP, Fixed Focus ear: 13MP, Auto Focus
	Card Slots	2 Nano SIM cards 1 Micro SD card 1 Encryption card for Narrowband
	Working Voltage	7.7V (standard)
	Battery	standard: 2400 mAh optional: 4000 mAh
Transceiver	Channel Spacing	12.5kHz/20kHz/25kHz
	TX Power	UHF: 1W/4W
	Digital Vocoder Type	AMBE+2™,NVOC
Environment	Dust and Water Proofing	IP68
	ESD	IEC 61000-4-2 (Level 4), ±8kV (Contact), ±15kV (Air)

Rivenditore Autorizzato:



BPG Radiocomunicazioni Srl

Via Nazionale, 13 10060
Pinasca TO - Italy
Tel. +39 0121800669
commerciale@bpg.it - www.bpg.it



Hytera Communications Europe

939 Yeovil Road, Slough, Berkshire, SL1 4NH
info@hytera-europe.com | www.hytera-europe.com

Hytera reserves the right to modify the product design and the specifications. In case of a printing error, Hytera does not accept any liability. All specifications are subject to change without notice.